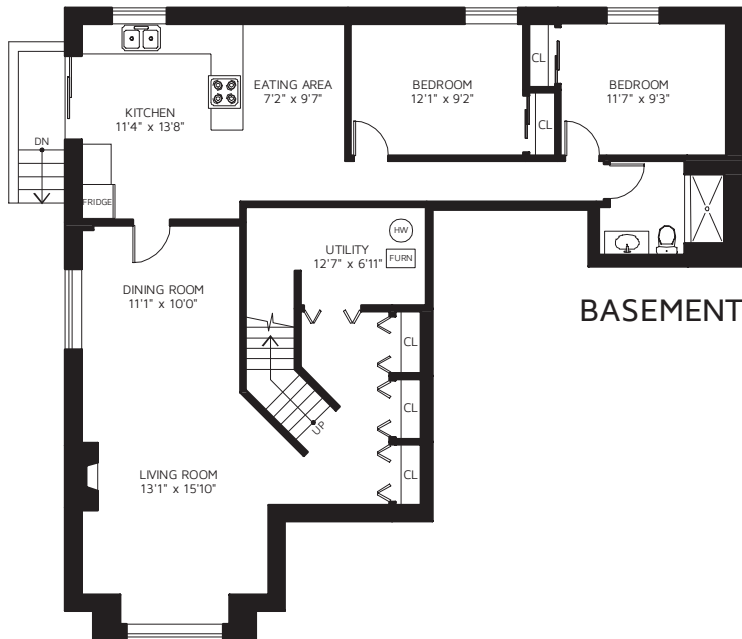
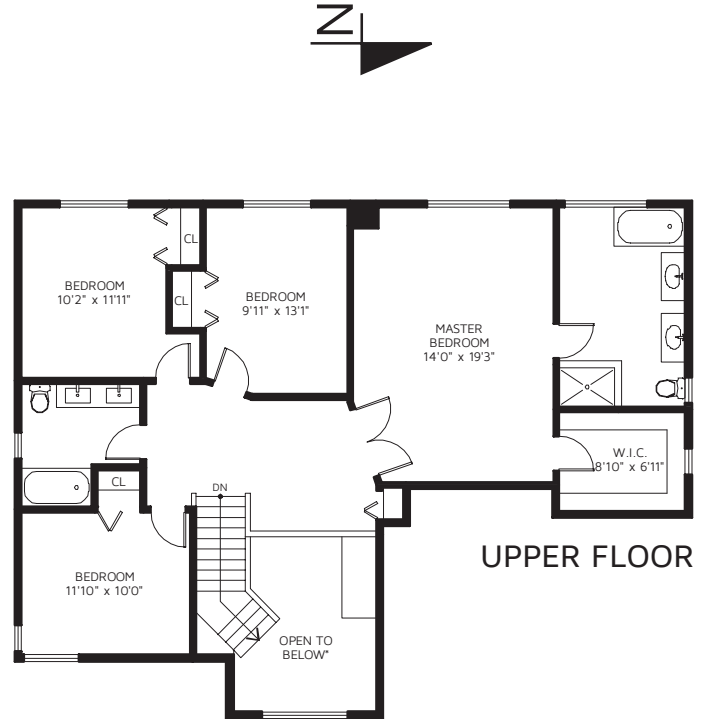
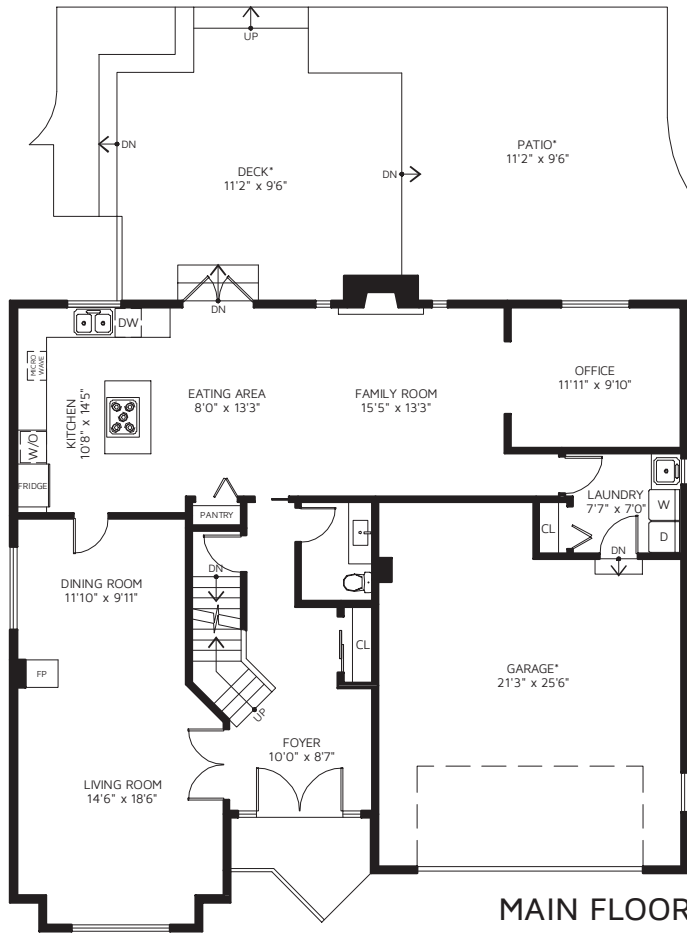


Mark Rasmussen, PREC

604-618-9270

mrasmussen@sutton.com

2193 HIXON CRT, NORTH VANCOUVER, V7G 2R6



UPPER FLOOR	1,228	SQ FT
MAIN FLOOR	1,392	SQ FT
BASEMENT	1,390	SQ FT
TOTAL FINISHED AREA	4,010	SQ FT

DECK*	373	SQ FT
PATIO*	468	SQ FT
GARAGE*	582	SQ FT

*NOT INCLUDED IN OVERALL SQUARE FOOTAGE